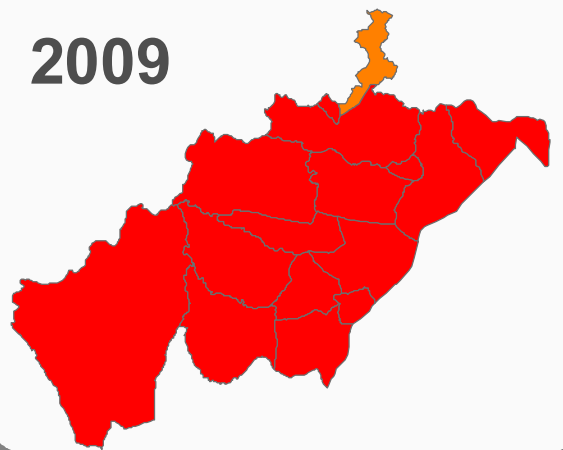
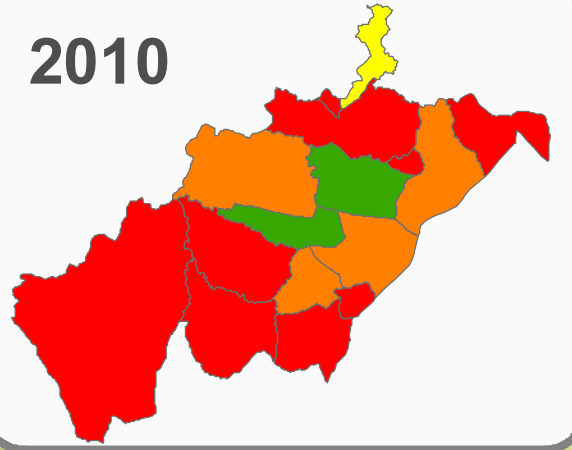


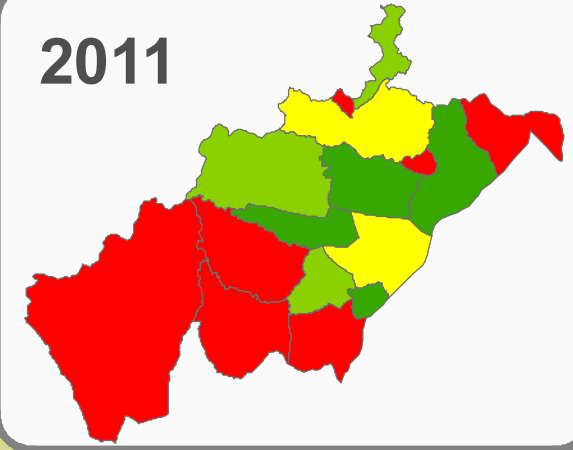
2009



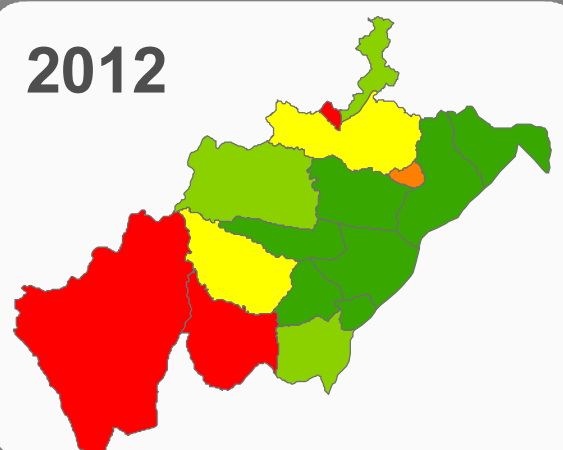
2010



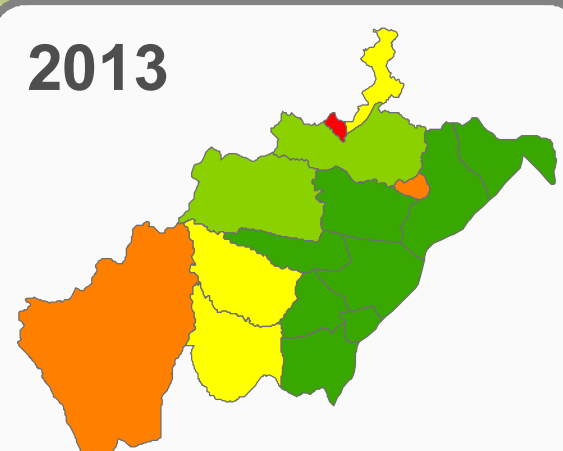
2011



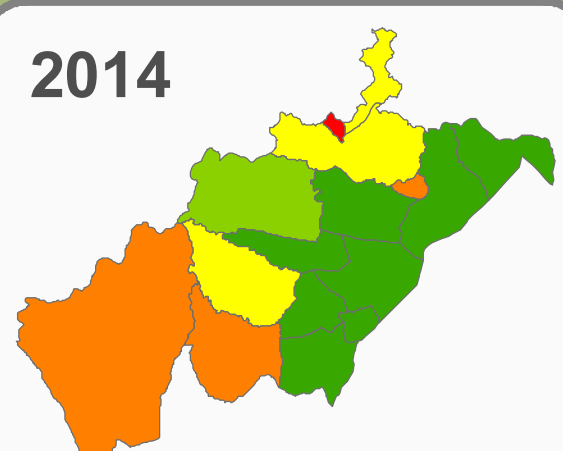
2012



2013



2014



FinnWASH-constructed water points and water supply coverage during project period 2009 - 2015

2015 MANDURA

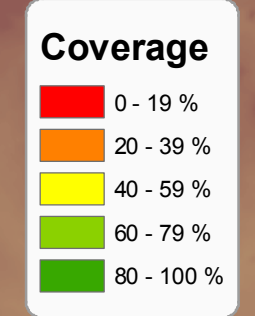
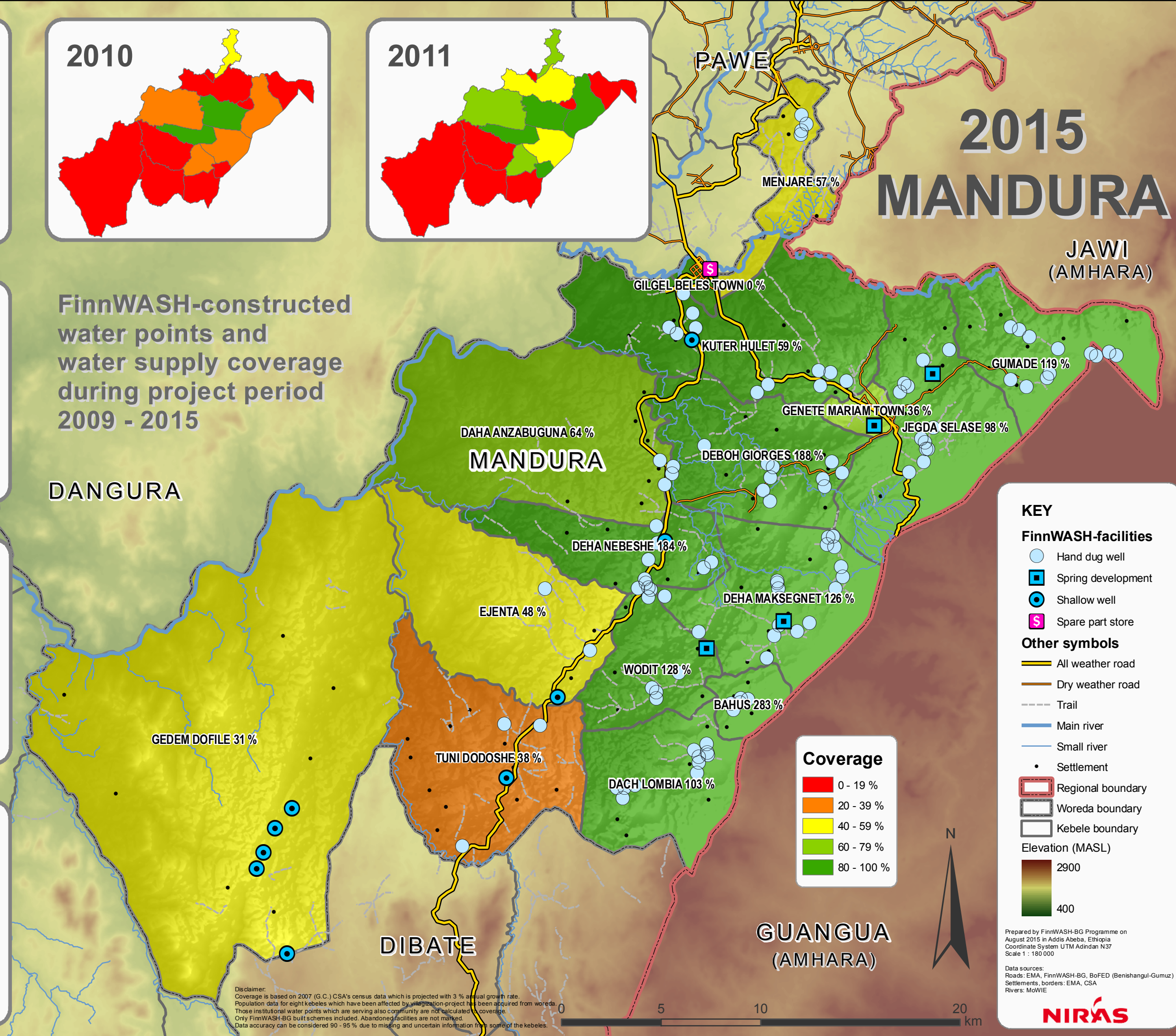
JAWI (AMHARA)

DANGURA

BULLEN

DIBATE

GUANGUA (AMHARA)



KEY

FinnWASH-facilities

- Hand dug well
- Spring development
- Shallow well
- Spare part store

Other symbols

- All weather road
- Dry weather road
- Trail
- Main river
- Small river
- Settlement

Regional boundary

Woreda boundary

Kebele boundary

Elevation (MASL)

2900

400

Prepared by FinnWASH-BG Programme on August 2015 in Addis Abeba, Ethiopia
Coordinate System UTM Adindan N37
Scale 1 : 180 000

Data sources:
Roads: EMA, FinnWASH-BG, BoFED (Benishangul-Gumuz)
Settlements, borders: EMA, CSA
Rivers: MoWIE



Disclaimer:
Coverage is based on 2007 (G.C.) CSA's census data which is projected with 3 % annual growth rate.
Population data for eight kebeles which have been affected by villagization-project has been acquired from woreda.
Those institutional water points which are serving also community are not calculated in coverage.
Only FinnWASH-BG built schemes included. Abandoned facilities are not marked.
Data accuracy can be considered 90 - 95 % due to missing and uncertain information from some of the kebeles.

