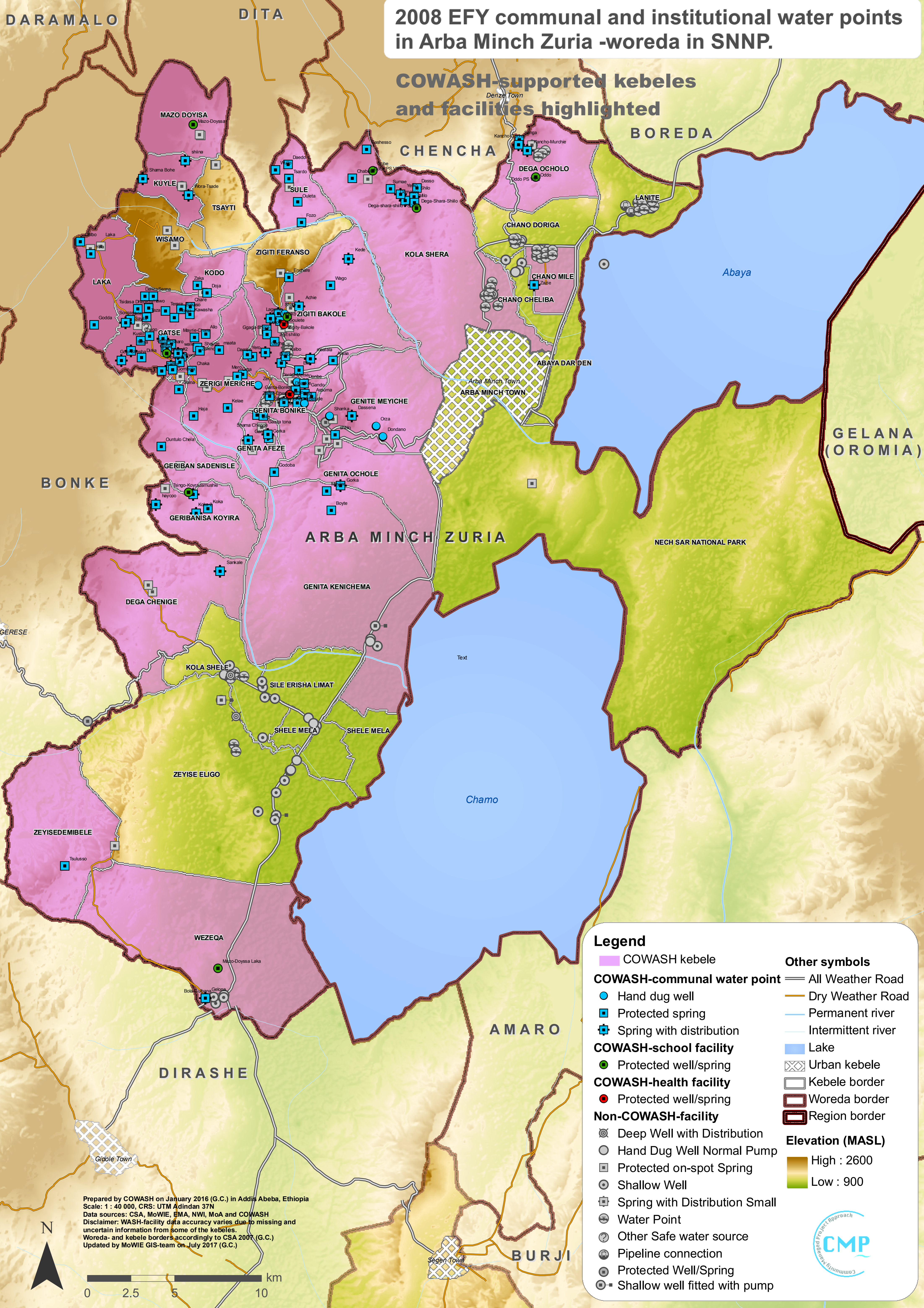


# 2008 EFY communal and institutional water points in Arba Minch Zuria -woreda in SNNP.

## COWASH-supported kebeles and facilities highlighted



**Legend**

- COWASH kebele
- COWASH-communal water point**
  - Hand dug well
  - Protected spring
  - Spring with distribution
- COWASH-school facility**
  - Protected well/spring
- COWASH-health facility**
  - Protected well/spring
- Non-COWASH-facility**
  - Deep Well with Distribution
  - Hand Dug Well Normal Pump
  - Protected on-spot Spring
  - Shallow Well
  - Spring with Distribution Small
  - Water Point
  - Other Safe water source
  - Pipeline connection
  - Protected Well/Spring
  - Shallow well fitted with pump

**Other symbols**

- All Weather Road
- Dry Weather Road
- Permanent river
- Intermittent river
- Lake
- Urban kebele
- Kebele border
- Woreda border
- Region border

**Elevation (MASL)**

- High : 2600
- Low : 900

Prepared by COWASH on January 2016 (G.C.) in Addis Ababa, Ethiopia  
 Scale: 1 : 40 000, CRS: UTM Adindan 37N  
 Data sources: CSA, MoWIE, EMA, NWI, MoA and COWASH  
 Disclaimer: WASH-facility data accuracy varies due to missing and uncertain information from some of the kebeles.  
 Woreda- and kebele borders accordingly to CSA 2007 (G.C.)  
 Updated by MoWIE GIS-team on July 2017 (G.C.)

