



National WASH Multi-Stakeholder Forum 8



Briefing on OWNPN and CWA Evolvment



NWCO

March 2017



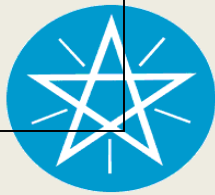
Presentation Outline

1. Historical WaSH Evolvement Path

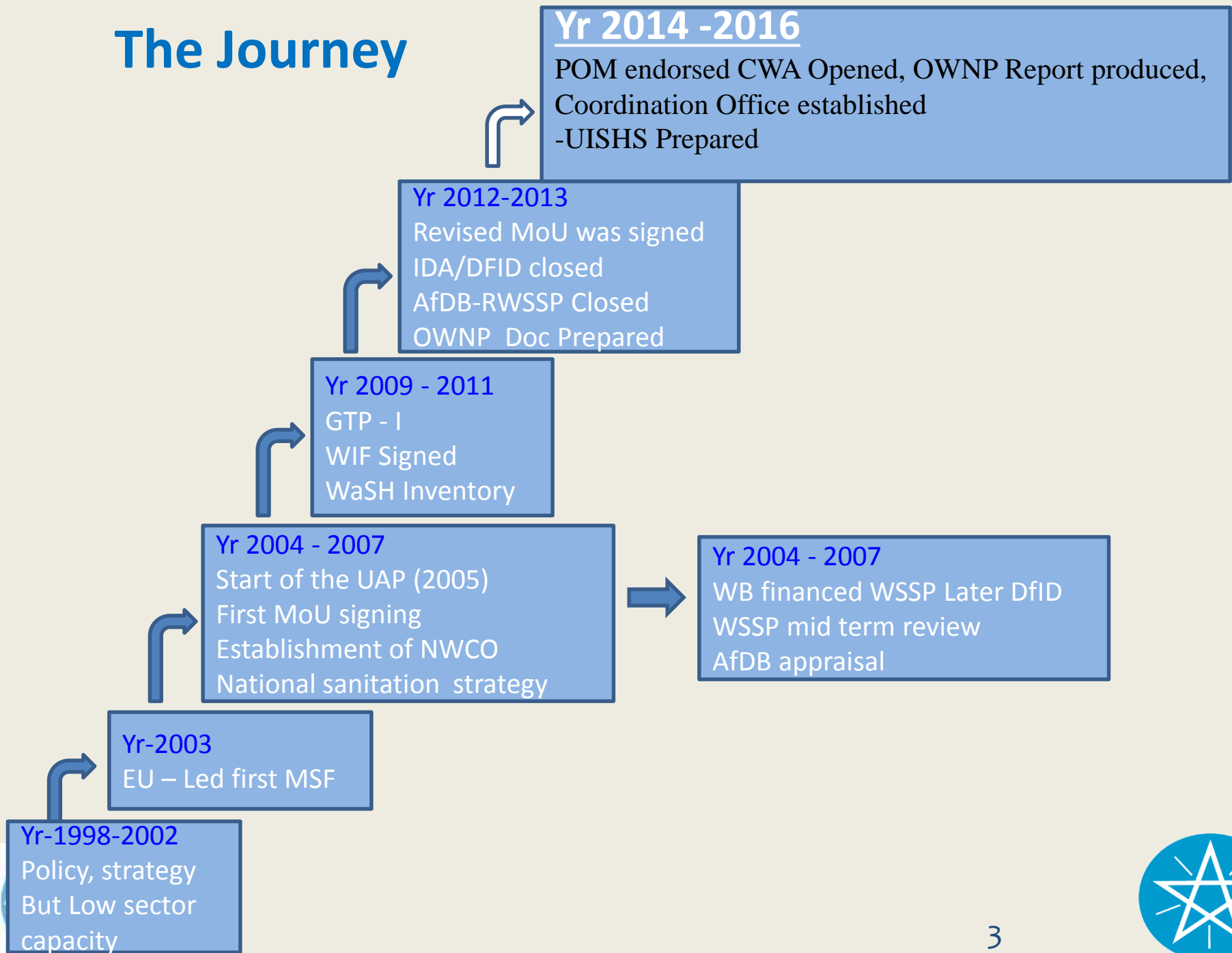
- WaSH Before 2004
- WaSH during 2004 – 2012
- WaSH After 2013 and beyond

2. One WaSH National Program (OWNP)

3. Consolidated WASH Account (CWA)



The Journey



1.1.The WaSH Era Before 2004

This is the time before the intervention of IDA financed WSSP:

The features of this era include:

- Project based intervention
- Non-integrated intervention (water, sanitation and hygiene separately)-
- Less donors and NGOs financing, less budget to the sector
- Supply driven water supply approach



- Low Capacity



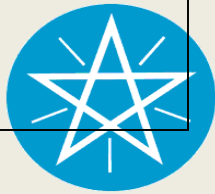
Continued....

- Government was both financer, implementer, and operator-Provider approach
- Minimal role of community and less private sector involvement
- Weak sector capacity (government at all levels, community and private sector)
- Less WaSH coverage, poor O&M, Poor H&S practice
- Less women involvement
- No WaSH strategic plan
- No Health Service Extension Program



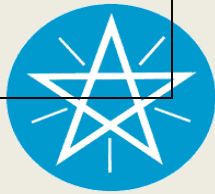
1.2. The WaSH Era from 2004- 2012

- Donors based programmatic approach (IDA, IDA/DFID, AfDB, CMP, etc)
- WaSH intervention in selected few woredas /districts
- Integrated WaSH intervention
- MoU among three WaSH sectors (Water, Health and Education) and PIM in place
- WaSH Coordination arrangement at national, region and participating woredas/districts started



Continued...

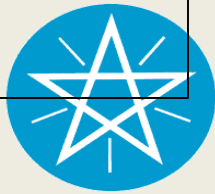
- Demand driven approach conceptualized
- Government`s role moved from provider to partner (enabler & facilitator environment)
- WaSH strategic planning practiced in some woredas
- Donors financing and government budget allocation for the WaSH sector increased,
- Community involvement and ownership improved
- WaSH sectors capacity particularly in program woredas relatively improved,
- Private sector involvement and partnership improved,
- Women involvement relatively improved,



Limitation & Constraints in this Era:

Not fully harmonized and aligned program (different approach, different plan, different M&E, different report, etc),

- WaSH sectors consider programs as added-on engagements since interventions were not fully aligned to their regular operational plan
- MoFED, BoFED, and WoFED not MoU signatory partners
- No clear accountability & review mechanism on MoU signatories
- Program intervention in few woredas and towns only
- Less recognition to CSOs WaSH involvement and partnership

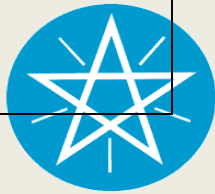


1.3. The WaSH Era from 2013 and Beyond

This is time for Implementation of One WaSH National Program (OWNP) based on The WaSH Implementation Framework (WIF):

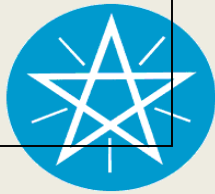
Distinguishing features of this era include:

- No more donors' based WaSH programs (only One National WaSH Program:
- one plan, one implementation framework, one budget, and one report
- Government-led program to achieve GTP/UAP, MDG
- MoU Revised to reinforce signatories accountability inclusive of MoFED and WIF in place,



Continued....

- OWNPN Developed with Four guiding pillars:
 - Integration,
 - harmonization,
 - alignment and
 - partnership
- CSOs well recognized as partners of one WaSH program including their engagements in the composite one WaSH plan and report,
- Program to be implemented all over the country in all woredas /districts
- The role of MSF at national and regional levels as the highest program reviewing body strengthened



Continued...

- Top-down and bottom-top planning approach interlinked vertically and horizontally: annual and strategic plans
- Kebele recognized as a WaSH planning and implementation unit
- Financial disbursements and replenishments from CWA highly relaxed
- MoFED, BoFEDs, and WoFEDs, responsibilities in financial management and reporting clearly defined and stated in the WIF and the revised

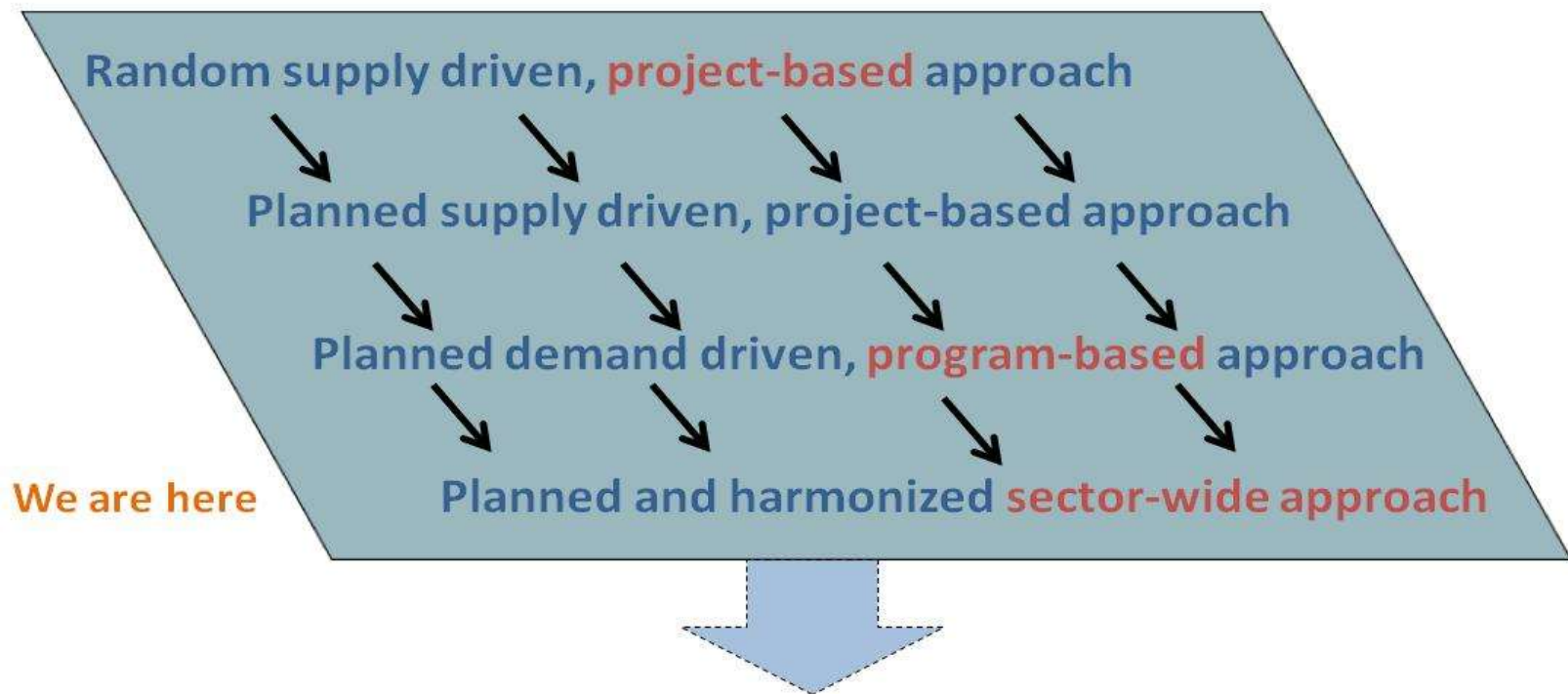
MoU



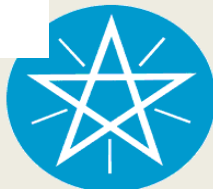
Ethiopia's WASH Programme Evolution

Coordination in the WASH sector has been evolving rapidly:

Started from here . . .



Towards here . . Single integrated national WASH program



2. One WaSH National Program

OWNP :

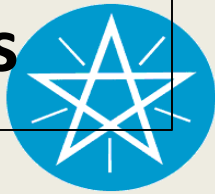
- ✓ It is government led sector wide approach program that advocates for One plan, One budget, One report. The source of finance for the implementation is from Government, DPs, NGOs and CSOs.



Cont...

This implies having:

- I. ONE PLANNING SYSTEM** – with linked strategic and annual WASH plans at each level
- I. ONE BUDGETING SYSTEM** – reflecting all WASH-related investments and expenditures
- II. ONE FINANCIAL MANAGEMENT SYSTEM** – with consolidated accounting and reports
- III. ONE PROCUREMENT SYSTEM** – with common standards and procedures
- IV. ONE MONITORING & EVALUATION SYSTEM** – with common indicators
- V. ONE REPORTING SYSTEM** – with agreed formats



Guiding principles

- Integration
 - ▶ Integrating safe water, sanitation and hygiene practices in a single program.
 - ❖ Rural and Urban communities,
 - ❖ Agrarian and Pastoralist settings,
 - ❖ Schools and Health Facilities.
 - ▶ Sectoral coordination & collaboration
- Alignment
 - ▶ Aligned with the Federal Government of Ethiopia policies, priorities, strategies, administrative systems, standards and procedures
- Harmonization
 - ▶ Follow one system (One WASH Plan, One WASH Budget, One WASH Report)
- Partnership

Increasing the commitment and engagement of DPs, NGOs, CSOs and the Private Sectors



3. Consolidated WASH Account

What is CWA?

- ✓ It is part of OWNP currently financed by four major DPs (World Bank, AfDB, DFID and UNICEF) & led by the government of Ethiopia. Finland is also expected to join soon.



Main differences

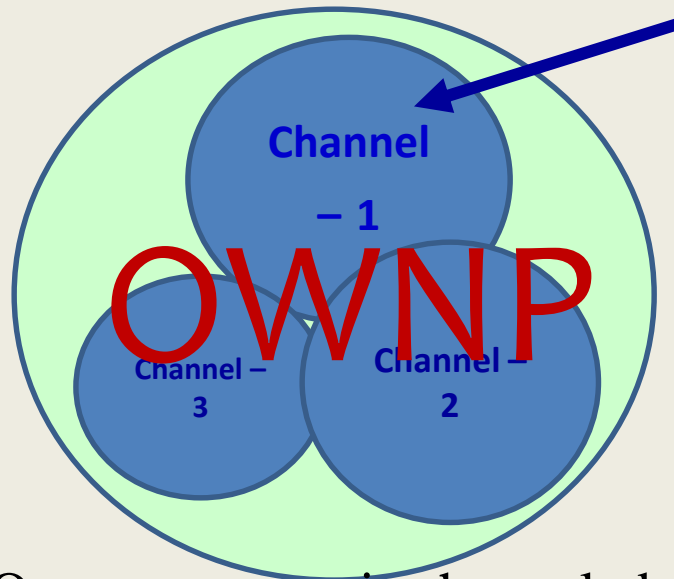
OWNP

- The whole country (all woredas and towns)
- US \$ 2.4 Billion based on GTTP-I targets. Under revision
- All Government, DPs, NGOs, CSOs, urban utilities, communities...
- JTR, MSF and sector annual and midyear review

CWA

- 382 woredas 144 small and Medium towns
- US \$ 436.2 Million for the next five years
- IDA , AfDB, DFID, UNICEF
- Main and interim Mission and review workshop

Current status



Consolidated WaSH Account - CWA

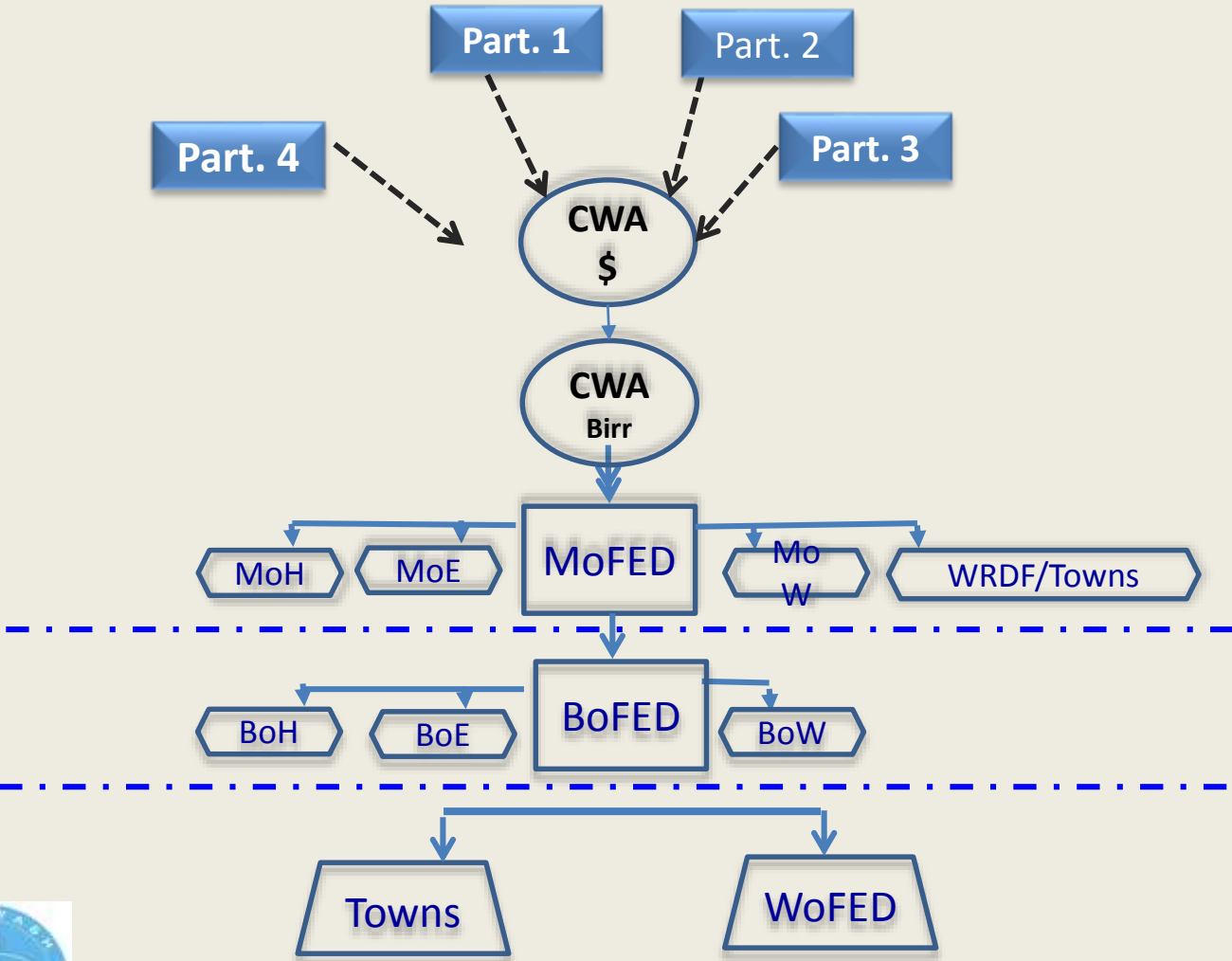
AfDB, DFID, UNICEF and WB

US \$ 436.2 Million for the next five years
(IDA 205, AfDB 90.2, DFID 131, UNICEF 10)

- One's resources is channeled to CWA it loses its identity.
- 382 Woredas, 124 small towns, 20 medium towns
- World Bank will lead the fiduciary (Procurement and financial management) and safeguards (Social and environmental)
- Recently – Finland expressed interest to Join CWA with a plan to start disbursement to the pooled fund
- CWA is coming toward its mid term and a Mid level evaluation is planned for June 2017



Fund flow arrangement under WaSH - CWA



CWA – With in the broader OWNP

- CWA is the Gov main program aligned with OWNP objectives of alignment, harmonization, integration
- CWA is one model of financing OWNP but not the only one
- CWA is not trust fund – Meaning it doesn't have service charge, all resources going directly and fully to the beneficiaries
- CWA is fully uses country systems (Procurement, financial management, Monitoring and evaluation, social and environmental safeguards and governance)
- CWA is the only package that makes an effort to align with the Paris declaration of coordinating all efforts to wards country systems and improving aid effectiveness.
- CWA is fully uses country systems (Procurement, financial management, Monitoring and evaluation, social and environmental safeguards and governance)
- Agreed World Bank to have oversight role on Fiduciary, safeguards for all CWA resources.



Message from the OWNP steering committee (Government of Ethiopia)

- Finally, Irrespective of the amount of resources The Sector Ministries encouraged all Development Partners to join CWA as it will help to make the package full fledged sector wide approach



Thank You

